



# Nature Alphabet Cards

WonderHere   
↓



*The WonderHere Family-Style Curriculum.* Copyright © 2019 by WonderHere. Published by WonderHere, Lakeland, FL, 33803.

All rights reserved. No part of this publication may be reproduced, stored in a retrieval system or transmitted in any form by any means, electronic, mechanical, photocopy, recording or otherwise, without the prior permission of the publisher except as provided by USA copyright law.

Printed in the Unites States of America.  
Library of Congress Catalog Card Number Pending

**Here are a few fun ways to use these alphabet cards in your every day learning!**

Set up a sand or salt tray (spread out sand or table salt on a tray or plate). Have your child choose an alphabet card and practice writing the letter in the sand or salt with their finger.

Spread out the alphabet cards. Have your child spell out words using various cards.

Take a nature walk with your child and collect various nature items like sticks, pebbles, leaves, and pine cones. Have them pick an alphabet card and practice forming that letter with the different items.

Have your child choose a fact from the back of a card to do more research on!



**Aa**



# Aa

**An acorn is the nut from the oak tree.**

**Bb**



# Bb

**A **bee** is a flying insect, related to the wasp and ant, and a major contributor to Earth's pollination.**



Cc



# Cc

**A **cactus** is a succulent plant, usually found in warm regions, with a leafless and often spiny body.**

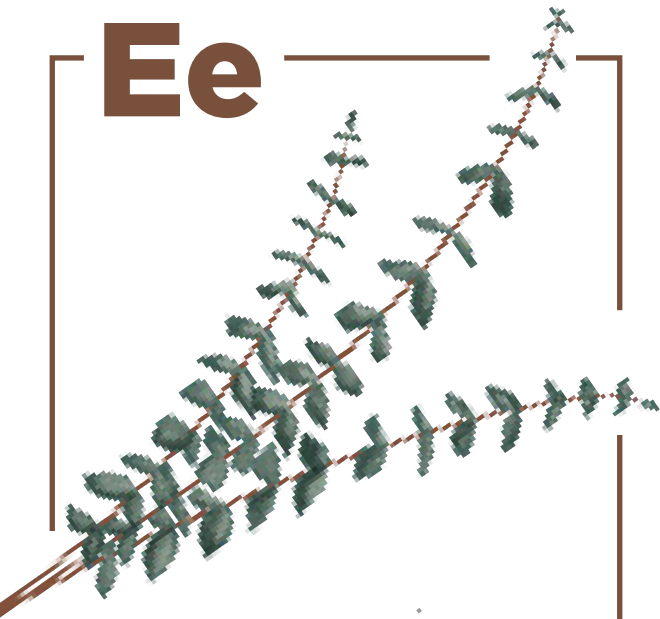
Dd



# Dd

**A dandelion is a weedy plant.**

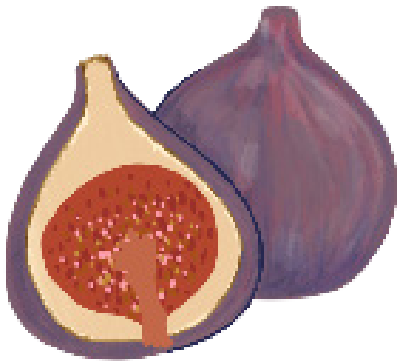
Ee



# Ee

**Eucalyptus** is a myrtle tree native to Australia and neighboring islands, with aromatic and medicinal leaves.

**Ff**



# Ff

**A **fig** is a soft, sweet seedy fruit that can be eaten both dried or ripe and is grown in warm climates.**



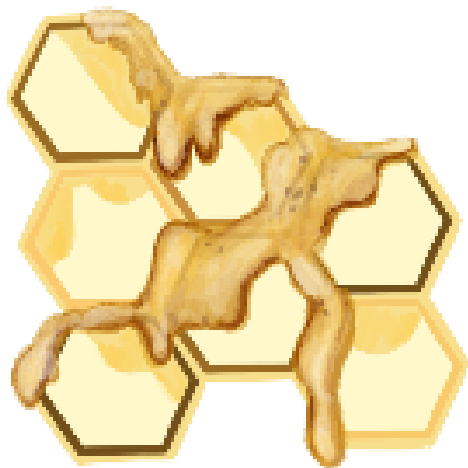
**Gg**



# Gg

**A garlic bulb is a pungent and flavorful plant used in cooking.**

**Hh**



# Hh

**A **honeycomb** is an assembly of cells shaped in hexagonal wax rows, formed by bees in their hive to store pollen, honey, and eggs.**

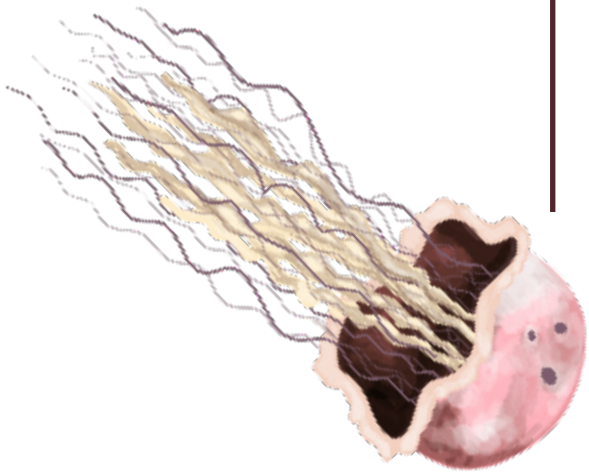
ii





**An *ibis* is a large wading bird with a long, thin downward-curved bill that lives in warm regions and tropical climates.**

Jj



**Jj**

**A jellyfish is an umbrella-like marine species with long, trailing tentacles.**



**Kk**



# Kk

**A kiwi is an edible berry with fuzzy brown skin and a tart green flesh.**

LI



L

**A lemon is an acidic, yellow fruit from a subtropical citrus tree.**

**Mm**



# Mm

**Mint is a sweet-smelling herb.**

**Nn**

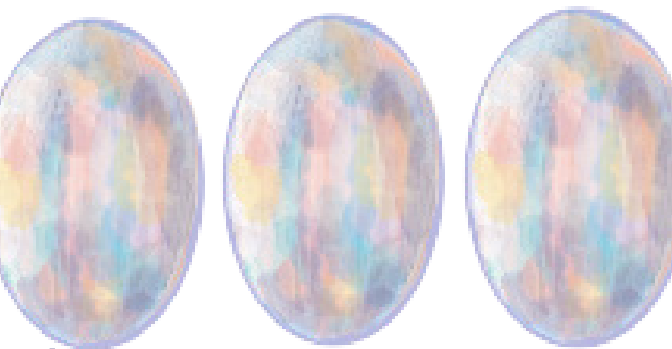


# Nn

**A nectarine is a mutation of a peach, which is a round fruit with a juicy yellow flesh. The peach has a fuzzy skin, while the nectarine has a smooth skin.**



Oo





**An **opal** is a gemstone that can range in color, often appearing transparent with varying colors across a dark background.**

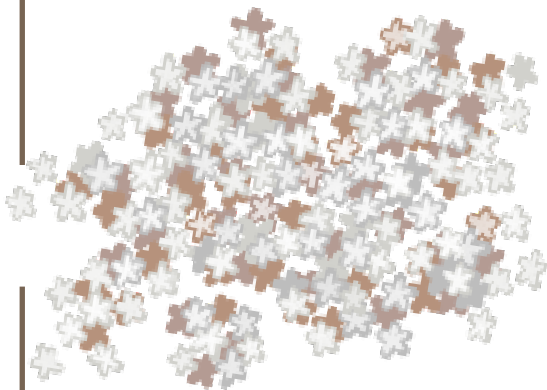
**Pp**



# Pp

**Palms are flowering plants that are part of the botanical family, and can come in the shape of shrubs, climbers, stemless plants, and trees.**

**Qq**



**Qq**

**A Queen Anne's Lace is a plant with umbels of white flowers.**

**Rr**



# Rr

**A radish is an edible root that is bitter and crisp.**



**Ss**



# Ss

**A snail is a mollusk with a spiral-coiled shell and a ventral muscular foot on which it glides.**

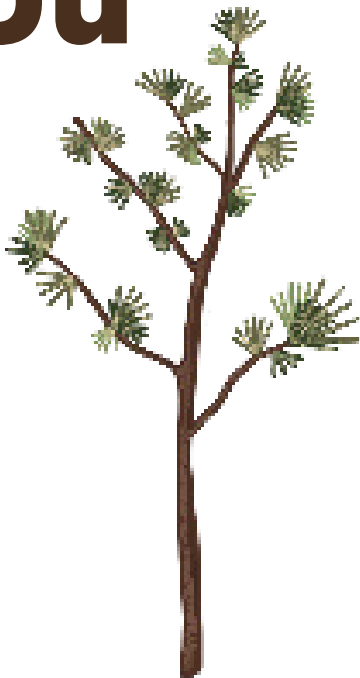
**Tt**



**Tt**

**A tulip is an upright, bell-shaped flower that comes in a variety of colors.**

Uu



# Uu

**An umbrella pine is a Japanese evergreen tree with linear leaves that grow in the shape of an umbrella.**

Vv



**Vv**

**A Venus flytrap is a  
carnivorous plant native to  
North and South Carolina.**



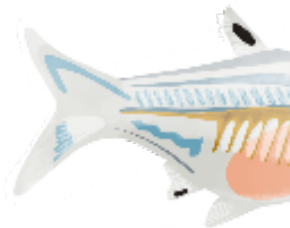
**Ww**



# Ww

**A **watermelon** is a large, elongated green fruit that is a member of the gourd family and has a sweet pink pulp inside.**

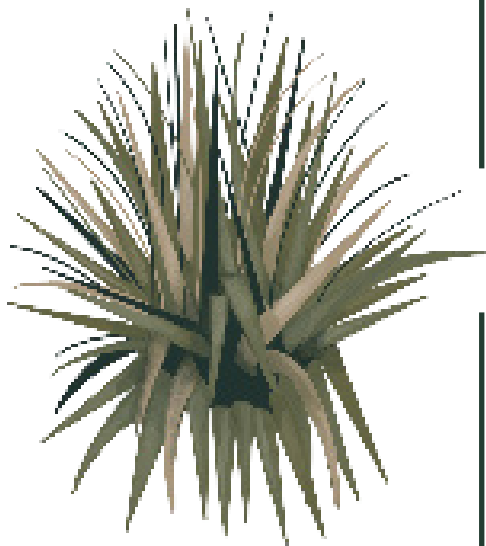
Xx



# Xx

**A x-ray tetra fish is a small schooling fish that lives in the Amazon River and has a translucent body.**

**Yy**



**Yy**

**The yucca plant is a member of the agave family, native to warmer regions, and is the state flower of Mexico.**

**Zz**



# Zz

**A zinnia is a plant native to Mexico and its surrounding areas, is a member of the daisy family, and is known for its colorful and showy flowers.**