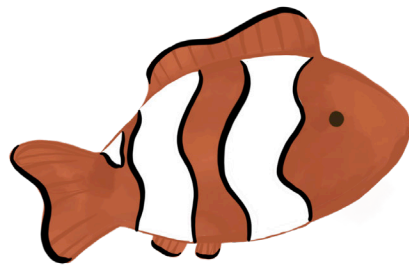


ANTONYMS

GO FISH!



WonderHere<sup>?</sup>  
↓

# Materials:

- Go Fish Game Cards

# Directions:

1. In a group of 2-4 players, shuffle the cards and deal each player 5 random cards. Place the rest of the cards face down in the middle.
2. Players look at their cards and look for any matches. If they have any, they should lay them down in front of them.
3. Players take turns asking one other person if they have the matching antonym card. If the person that they ask does not have their matching card, that person says "Go Fish!" and the person must pick up a card from the deck. If that person does have the matching antonym card, they must give it to the person.
4. The next person to go is who was asked
5. The game continues until one person runs out of cards in their hand.
6. The winner is the person who has the most pairs at the end of the game.

ENORMOUS



TINY



CONTENT



DISMAYED



SHRIEK



WHISPER



INSIGNIFICANT



RELEVANT



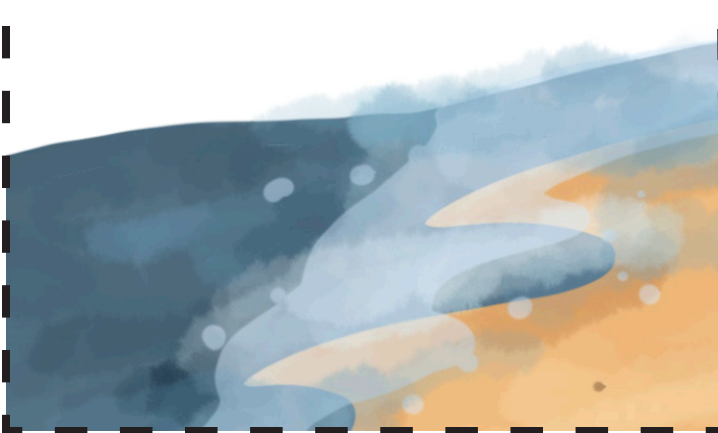
INTERIOR



EXTERIOR



OCEAN



LAND





MINOR



ADULT



FRIEND



ENEMY



RUN



SAUNTER



WAIL



GIGGLE



MELANCHOLY



JOYFUL



SUBURBS



METROPOLIS





EXTRAVAGANT



PLAIN



STRANGER



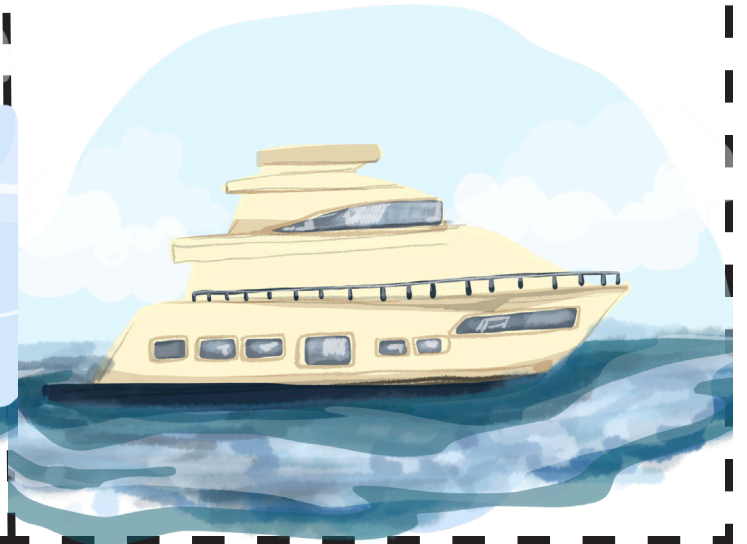
RELATIVE



UNPLEASANT



PLEASANT



SCORCHING



FRIGID



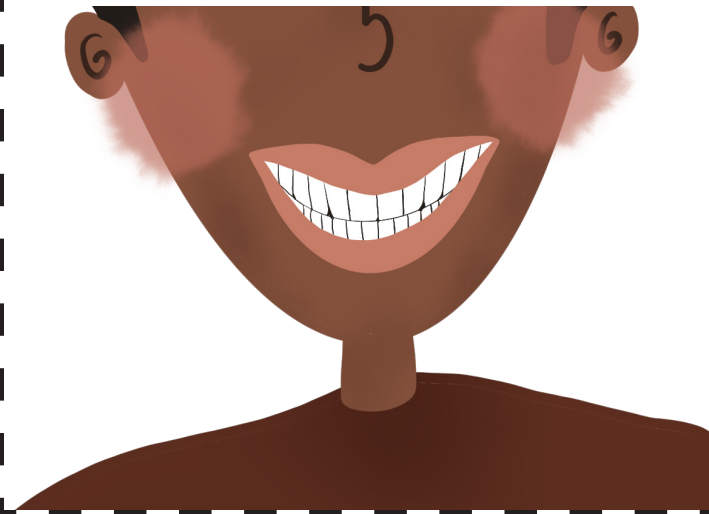
CONFIDENT



NERVOUS



TALK



LISTEN



BEAUTIFUL



UNATTRACTIVE

