

CAPTION

THAT

WonderHere[?]
↓

Directions:

Look at each illustration and write a caption using personification or synecdoche to explain what is happening in the illustration. Label your caption "personification" or "synecdoche".

PERSONIFICATION refers to a figure of speech when the writer or speaker gives an animal or object human-like traits to convey a specific idea.

Example Sentence: The floor groaned under the weight of the crowd. Explanation: The writer uses the human-like trait of groaning to describe how the floor sounds when a crowd is standing on it.

SYNECDOCHE is a figure of speech where the writer or speaker uses a word or phrases that refers to a part of something to represent a whole.

Example Sentence: We need all hands on deck for this assignment. Explanation: The writer uses the term "hands" to represent the need for an entire group to help with something.



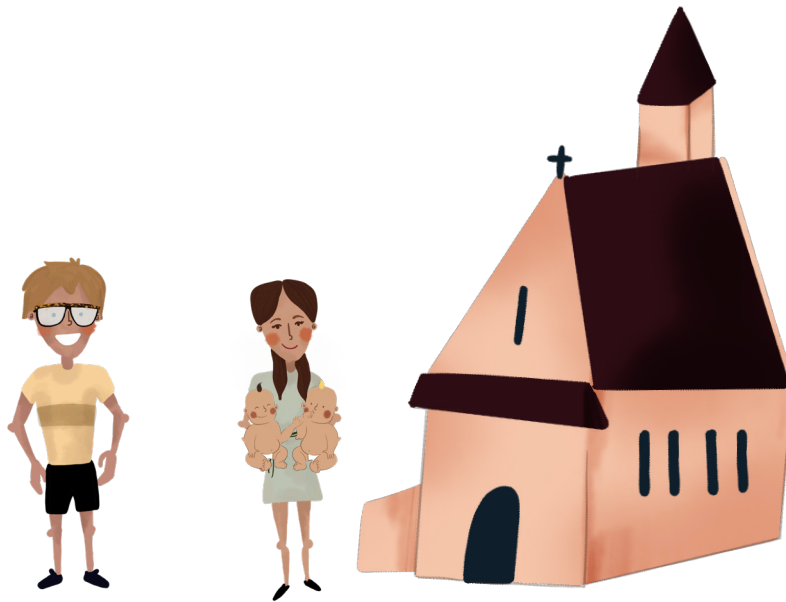
Four horizontal dashed lines for writing.



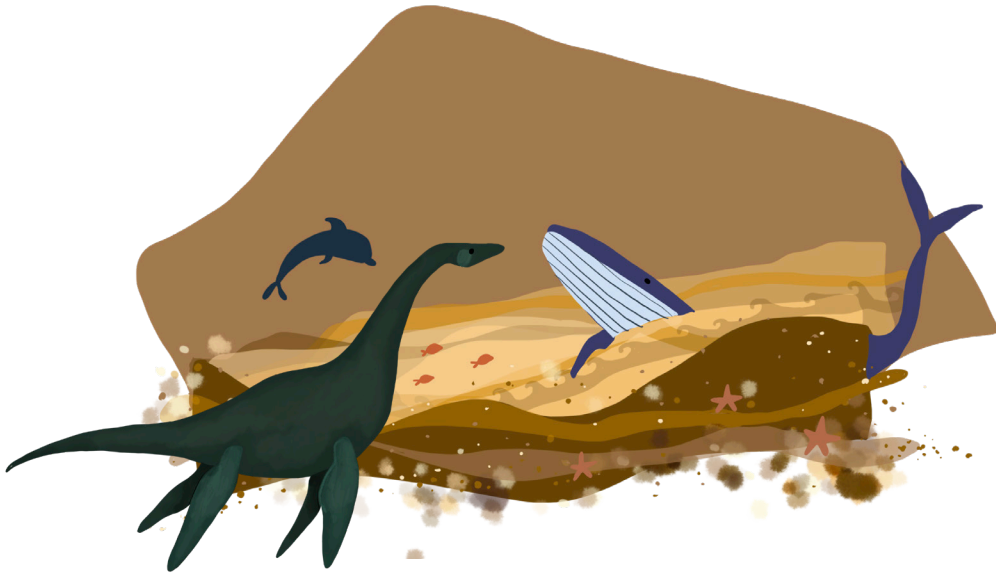
Four horizontal dashed lines for writing.



Four horizontal dashed lines for writing practice.



Four horizontal dashed lines for writing practice.



Four horizontal dashed lines for writing practice.



Four horizontal dashed lines for writing practice.