

NON-FICTION

TEXT

FEATURES

"I SPY"

WonderHere<sup>®</sup>

# Materials:

- Text Feature Cards, cut out & laminated (optional)
- Your child's favorite non-fiction book
- "I Spy" Lookout Page, laminated (optional)

# Directions:

1. Have your child review the Text Feature Cards to gain a better understanding of each different feature.
2. With their favorite book in hand & the "I Spy" Lookout Page, have your child go searching in the book for different text features.
3. Have your child cross off the text features they find along the way!
4. Extension: Laminate or place the Lookout Page in a clear page protector & grab an expo marker. Keep using this page with other non-fiction books for extra practice!

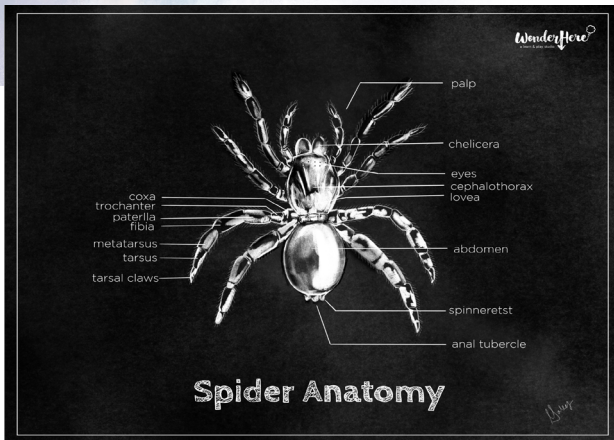
# TITLE



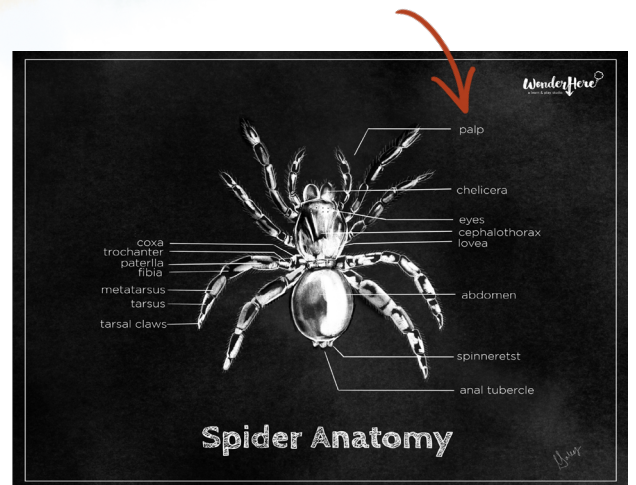
# HEADER




# DIAGRAM



# LABEL



# TABLE OF CONTENTS

<b>Contents</b>		
Butterfly or moth?	6	
The life of a butterfly	8	
Courtship and egg laying	10	
An emerging caterpillar	12	
Caterpillars	14	
Exotic caterpillars	16	
Caterpillar to pupa	20	
The pupa stage	22	
An emerging butterfly	24	
Butterflies	26	
Temperate butterflies	28	
Mountain butterflies	30	
Exotic butterflies	32	
Moths	36	
Cocoons	38	
Silk moths	40	
Temperate moths	42	
	44	
	48	
	50	
	52	
	54	
	56	
	58	
	60	
	62	
	64	
	Index	

Giant Purple Emperor  
Japanese national  
butterfly,  
Suzuki Charade  
(Southeast Asia)

# GLOSSARY

## GLOSSARY

- Corolla** The inner envelope of floral leaves of a flower, usually of delicate texture and of some color other than green.
- Leaf** One of the expanded, usually green organs borne by the stem of a plant.
- Petal** One of the often colored segments of the corolla of a flower.
- Pollen** The fertilizing element of flowering plants, consisting of fine, powdery, yellowish grains or spores, sometimes in masses.
- Root** Any underground part of a plant
- Stamen** The pollen-bearing organ of a flower, consisting of the filament and the anther.

# PHOTOGRAPH



# ILLUSTRATION



## CAPTION



The bumble bee is a large hairy bee that lives in large colonies.

## BOLD PRINT

The **bumble bee** is a large hairy bee that lives in large colonies.

## ITALICS

The *bumble bee* is a large hairy bee that lives in large colonies.

## INDEX

### Index

Cheetahs	4-17
Jaguars	18-22
Monkeys	23-30
Parrots	31-35
Rhinoceros	36-42
Zebras	43-50

# "I Spy" Lookout Page

Which non-fiction text features can you spy?



Book Title:

-----

- Caption
- Index
- Glossary
- Italics
- Bold Print
- Photograph
- Illustration
- Diagram
- Label
- Title
- Header
- Table of Contents